

PTV45 and PTV50, SIB in 25 fractions (1.8 and 2.0 Gy/fraction)

#	METRIC ID (26 Total Metrics)	PERFORMANCE BINS				
[01]	Volume (%) of the PTV45-PTV50 covered by 45 (Gy)	< 90 UNACCEPTABLE	90 MARGINAL	93 ACCEPTABLE	95 GOOD	97 IDEAL
[02]	Volume (%) of the PTV45-PTV50 covered by 42.75 (Gy)	< 97 UNACCEPTABLE	97 MARGINAL	98 ACCEPTABLE	99 GOOD	100 IDEAL
[03]	Volume (%) of the CTV45 covered by 45 (Gy)	< 97 UNACCEPTABLE	97 MARGINAL	98 ACCEPTABLE	99 GOOD	100 IDEAL
[04]	Volume (%) of the PTV45-PTV50 covered by 47.25 (Gy)	> 50 UNACCEPTABLE	50 MARGINAL	40 ACCEPTABLE	30 GOOD	20 IDEAL
[05]	Volume (%) of the PTV50 covered by 50 (Gy)	< 90 UNACCEPTABLE	90 MARGINAL	93 ACCEPTABLE	95 GOOD	97 IDEAL
[06]	Volume (%) of the PTV50 covered by 47.5 (Gy)	< 97 UNACCEPTABLE	97 MARGINAL	98 ACCEPTABLE	99 GOOD	100 IDEAL
[07]	Volume (%) of the CTV50 covered by 50 (Gy)	< 97 UNACCEPTABLE	97 MARGINAL	98 ACCEPTABLE	99 GOOD	100 IDEAL
[08]	Dose (Gy) covering 0.03 (cc) of the PTV50	> 60 UNACCEPTABLE	60 MARGINAL	57.5 ACCEPTABLE	55 GOOD	52.5 IDEAL
[09]	Conformation Number [45 (Gy), PTV45]	< 0.6 UNACCEPTABLE	0.6 MARGINAL	0.7 ACCEPTABLE	0.8 GOOD	0.9 IDEAL
[10]	Structure(s) containing the global max dose point	PTV45 MARGINAL	CTV45 ACCEPTABLE	PTV50 GOOD	CTV50 IDEAL	
[11]	High dose volume of regret (cc) [55 (Gy), PTV45]	> 0.3 UNACCEPTABLE	0.3 MARGINAL	0.2 ACCEPTABLE	0.1 GOOD	0.03 IDEAL
[12]	Volume (%) of the BOWEL SPACE covered by 40 (Gy)	> 50 UNACCEPTABLE	50 MARGINAL	40 ACCEPTABLE	35 GOOD	30 IDEAL
[13]	Volume (%) of the ANOURECTUM covered by 45 (Gy)	> 60 UNACCEPTABLE	60 MARGINAL	55 ACCEPTABLE	45 GOOD	37.5 IDEAL
[14]	Volume (%) of the ANOURECTUM covered by 50 (Gy)	> 40 UNACCEPTABLE	40 MARGINAL	30 ACCEPTABLE	25 GOOD	20 IDEAL
[15]	Volume (%) of the BM-PTV45 covered by 20 (Gy)	> 75 UNACCEPTABLE	75 MARGINAL	60 ACCEPTABLE	40 GOOD	25 IDEAL
[16]	Volume (%) of the BLADDER covered by 45 (Gy)	> 40 UNACCEPTABLE	40 MARGINAL	35 ACCEPTABLE	32 GOOD	30 IDEAL
[17]	Volume (%) of the BLADDER covered by 50 (Gy)	> 25 UNACCEPTABLE	25 MARGINAL	20 ACCEPTABLE	18 GOOD	15 IDEAL
[18]	Volume (%) of the FEMORAL HEAD-LT covered by 30 (Gy)	> 20 UNACCEPTABLE	20 MARGINAL	10 ACCEPTABLE	5 GOOD	1 IDEAL
[19]	Volume (%) of the FEMORAL HEAD-RT covered by 30 (Gy)	> 20 UNACCEPTABLE	20 MARGINAL	10 ACCEPTABLE	5 GOOD	1 IDEAL
[20]	Number of treatment beams	Unscored metric and/or performance bins are not defined.				

PTV45 and PTV50, SIB in 25 fractions (1.8 and 2.0 Gy/fraction)

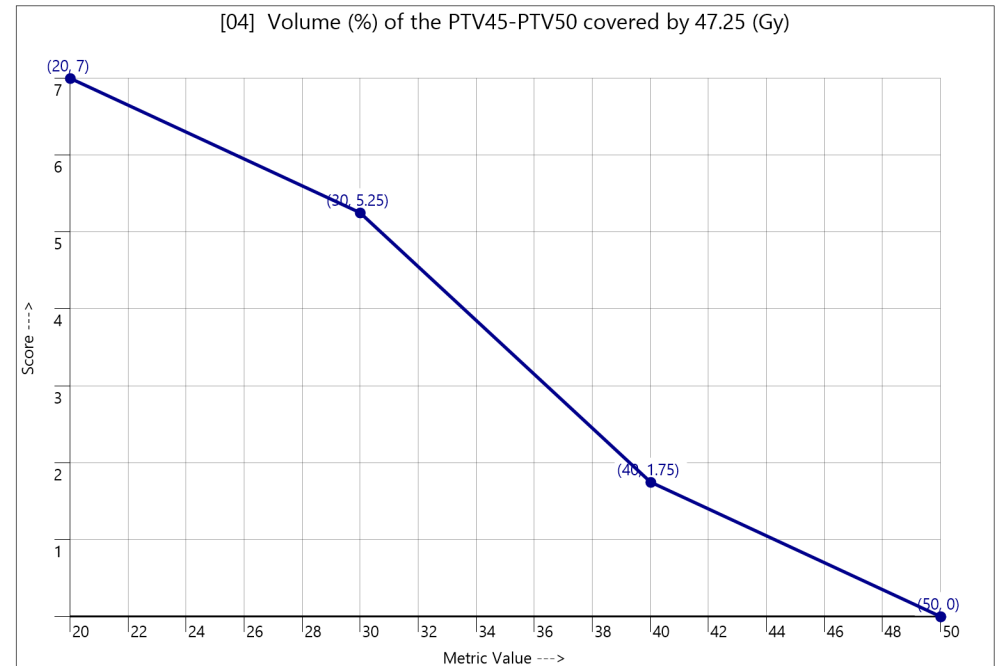
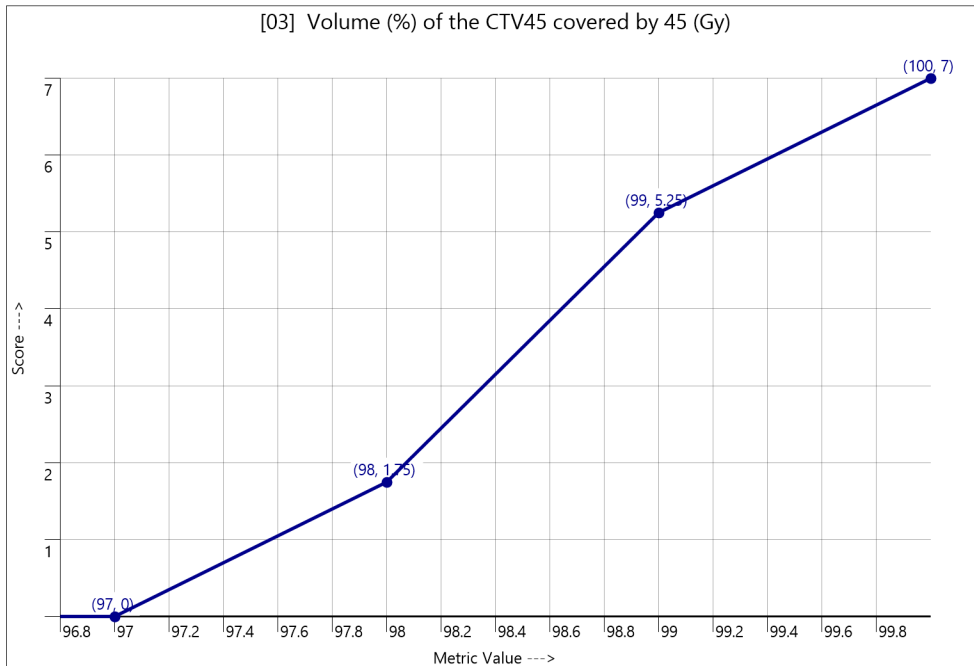
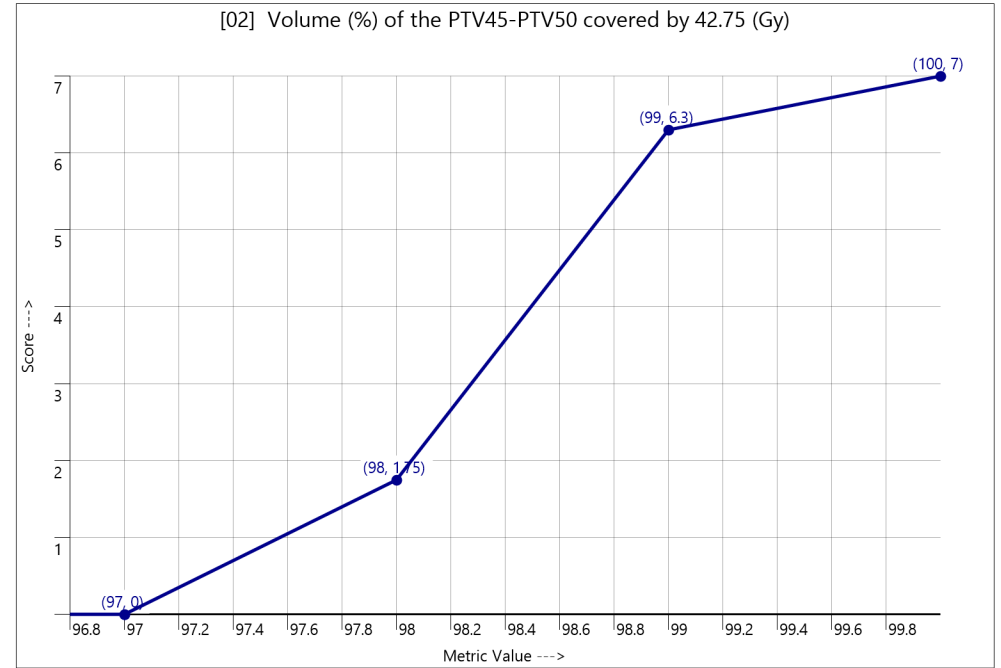
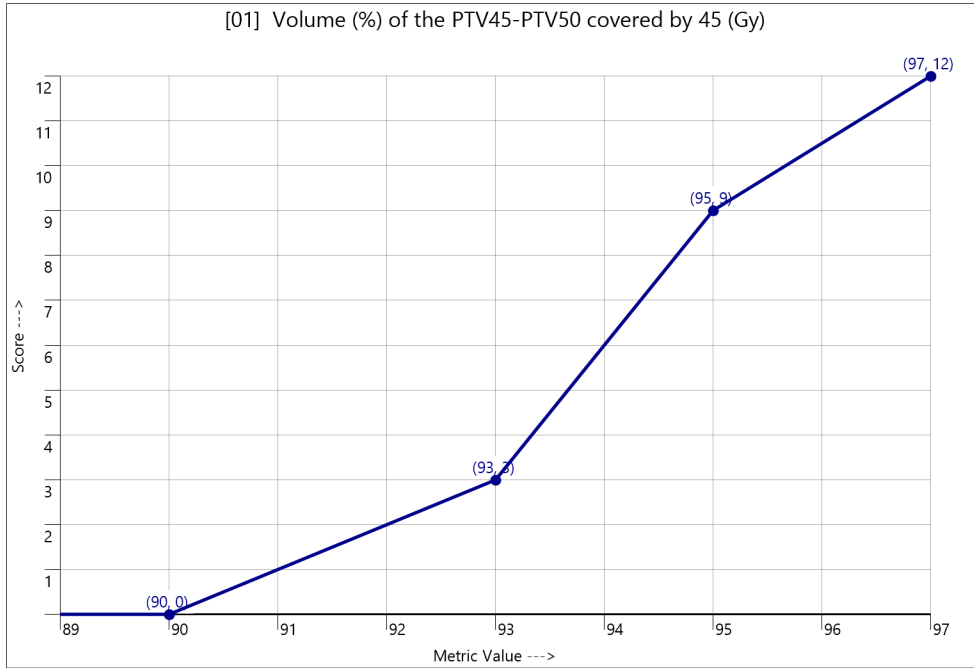
#	METRIC ID (26 Total Metrics)	PERFORMANCE BINS
[21]	Number of unique isocenters	Unscored metric and/or performance bins are not defined.
[22]	Number of unique couch angles	Unscored metric and/or performance bins are not defined.
[23]	Cumulative meterset over all treatment beams	Unscored metric and/or performance bins are not defined.
[24]	Estimated 'beam-on' time, all beams (minutes)	Unscored metric and/or performance bins are not defined.
[25]	Max dose voxel dimension (mm)	Unscored metric and/or performance bins are not defined.
[26]	Structure(s) not fully covered by dose grid	Unscored metric and/or performance bins are not defined.

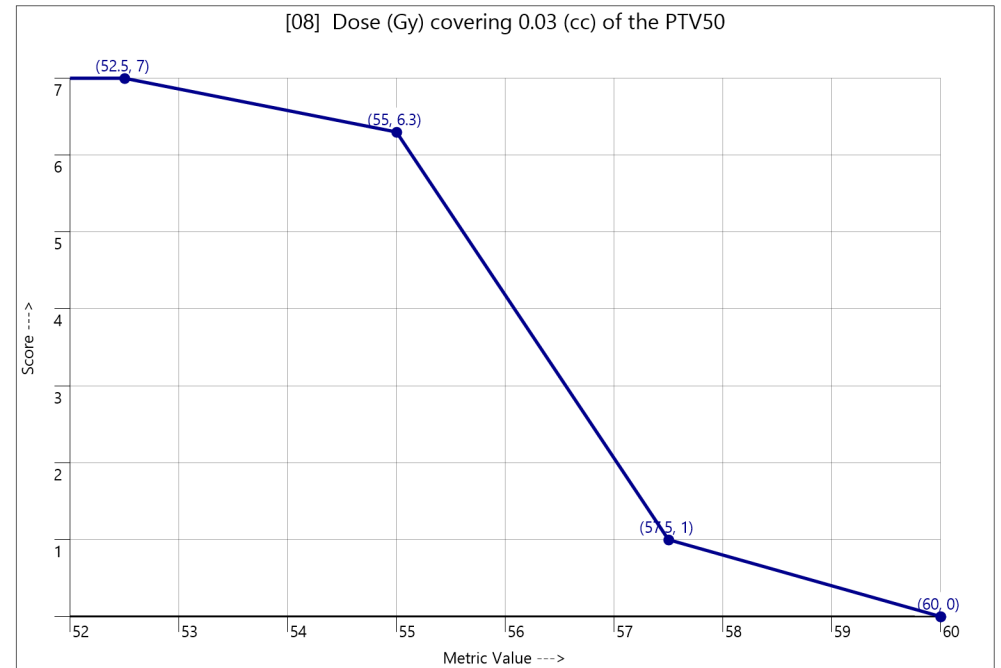
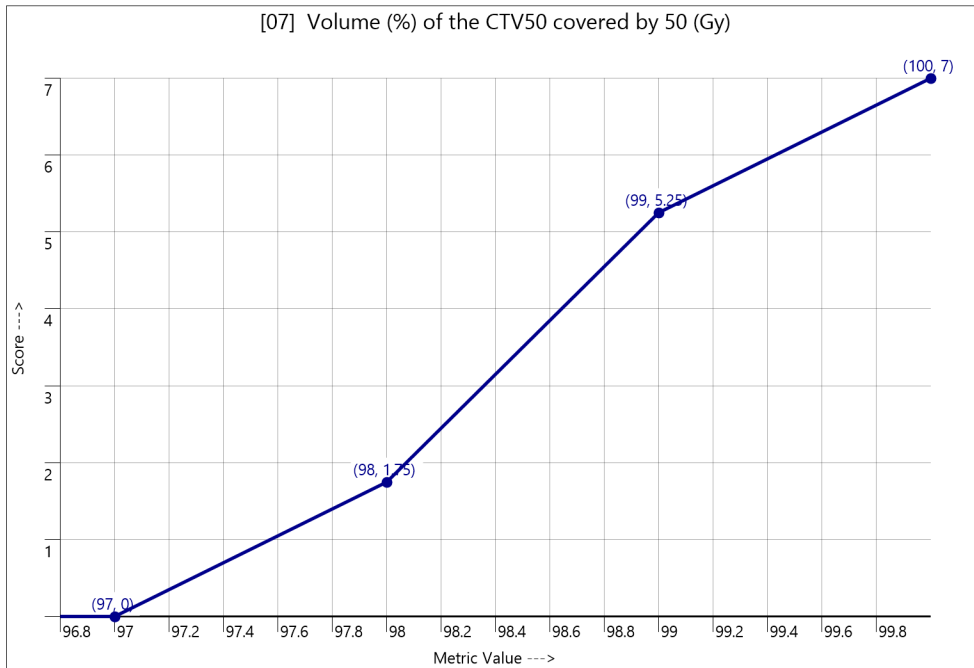
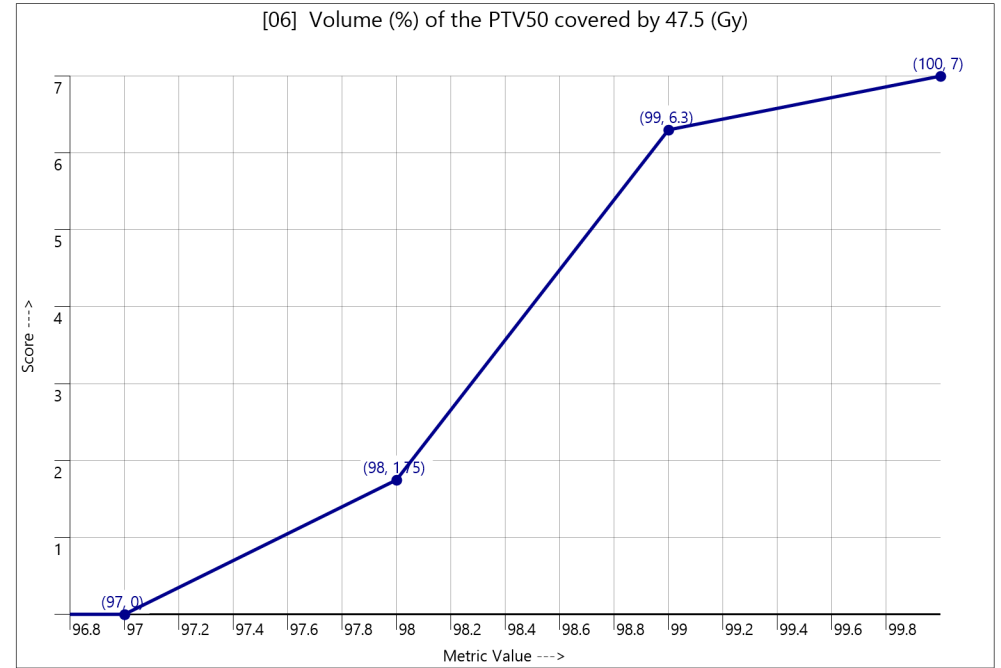
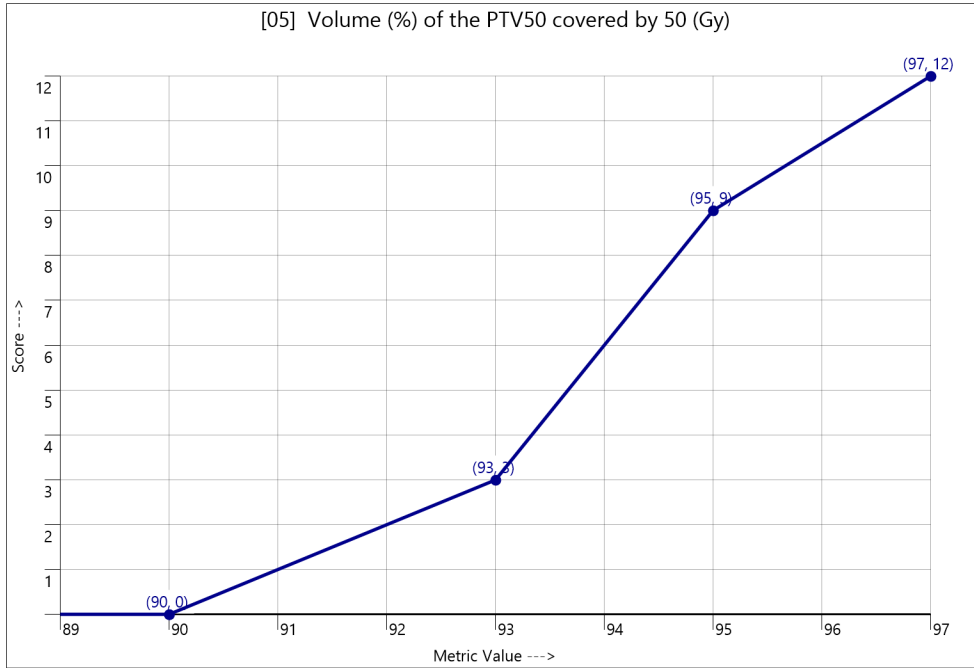
PTV45 and PTV50, SIB in 25 fractions (1.8 and 2.0 Gy/fraction)

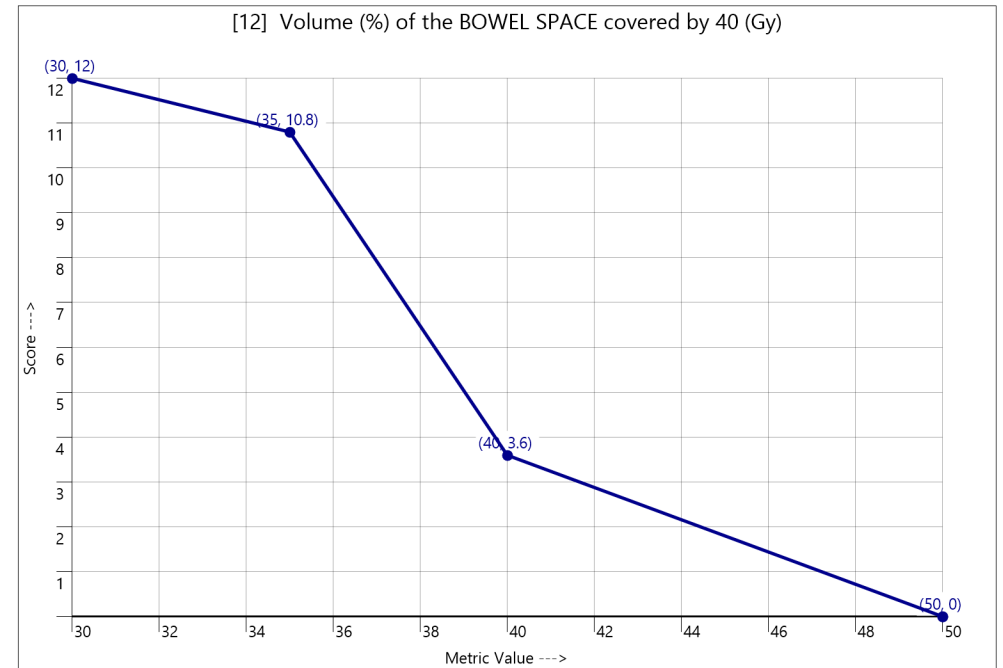
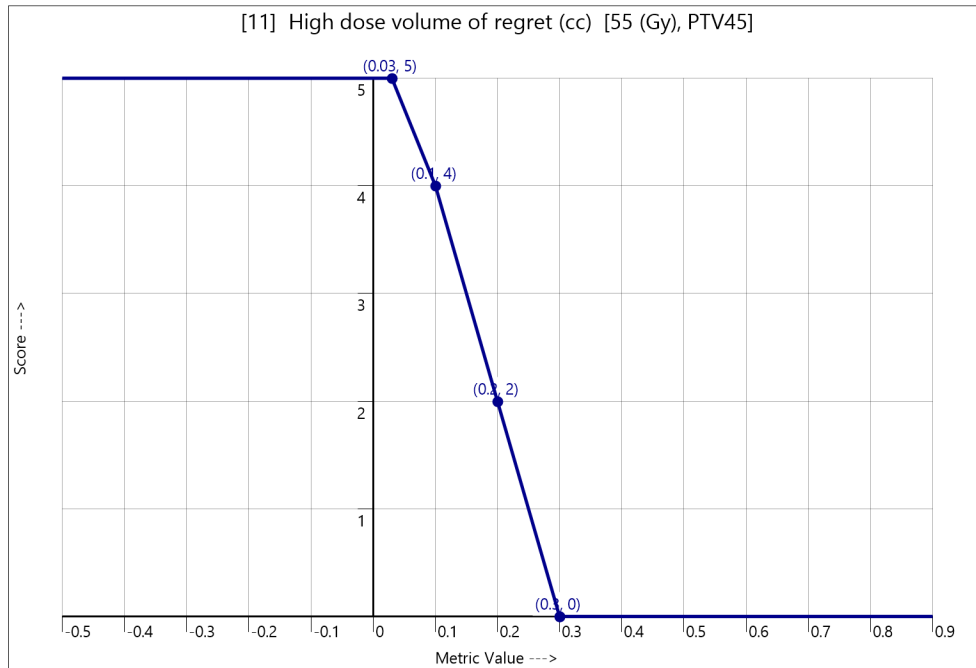
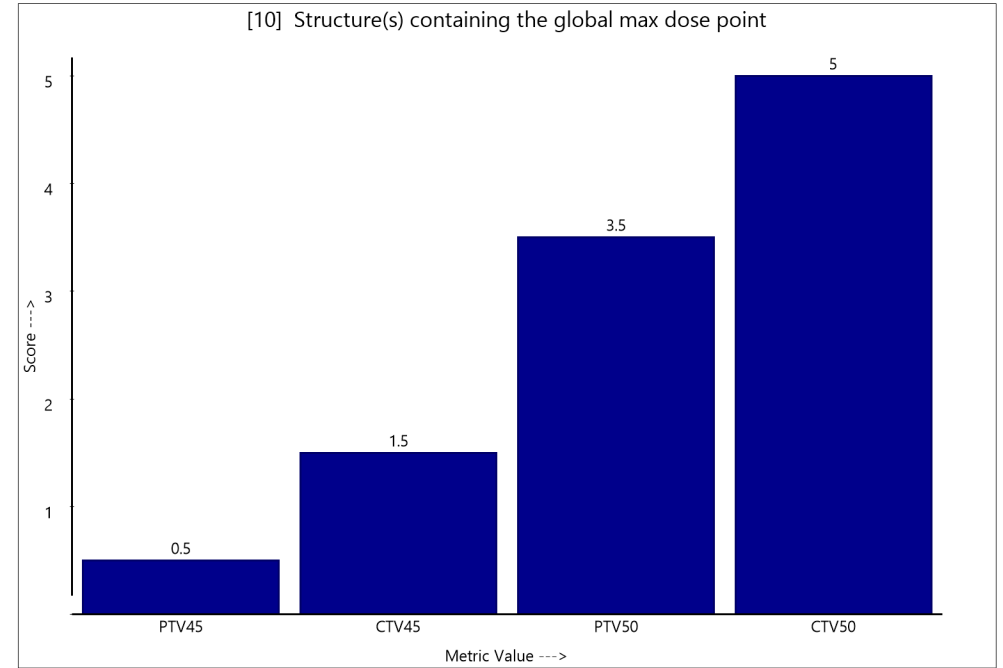
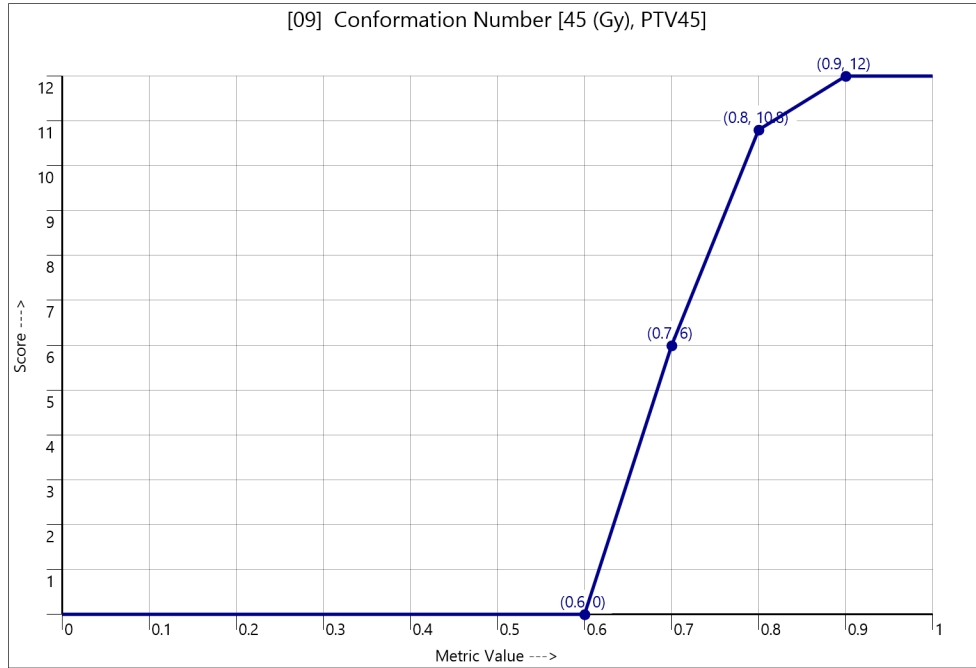
#	METRIC ID (26 Total Metrics)	MIN REQ	IDEAL	WEIGHT (150)
[01]	Volume (%) of the PTV45-PTV50 covered by 45 (Gy)	90	97	12 points
[02]	Volume (%) of the PTV45-PTV50 covered by 42.75 (Gy)	97	100	7 points
[03]	Volume (%) of the CTV45 covered by 45 (Gy)	97	100	7 points
[04]	Volume (%) of the PTV45-PTV50 covered by 47.25 (Gy)	50	20	7 points
[05]	Volume (%) of the PTV50 covered by 50 (Gy)	90	97	12 points
[06]	Volume (%) of the PTV50 covered by 47.5 (Gy)	97	100	7 points
[07]	Volume (%) of the CTV50 covered by 50 (Gy)	97	100	7 points
[08]	Dose (Gy) covering 0.03 (cc) of the PTV50	60	52.5	7 points
[09]	Conformation Number [45 (Gy), PTV45]	0.6	0.9	12 points
[10]	Structure(s) containing the global max dose point	PTV45	CTV50	5 points
[11]	High dose volume of regret (cc) [55 (Gy), PTV45]	0.3	0.03	5 points
[12]	Volume (%) of the BOWEL SPACE covered by 40 (Gy)	50	30	12 points
[13]	Volume (%) of the ANORECTUM covered by 45 (Gy)	60	37.5	12 points
[14]	Volume (%) of the ANORECTUM covered by 50 (Gy)	40	20	12 points
[15]	Volume (%) of the BM-PTV45 covered by 20 (Gy)	75	25	12 points
[16]	Volume (%) of the BLADDER covered by 45 (Gy)	40	30	5 points
[17]	Volume (%) of the BLADDER covered by 50 (Gy)	25	15	5 points
[18]	Volume (%) of the FEMORAL HEAD-LT covered by 30 (Gy)	20	1	2 points
[19]	Volume (%) of the FEMORAL HEAD-RT covered by 30 (Gy)	20	1	2 points
[20]	Number of treatment beams	---	---	---

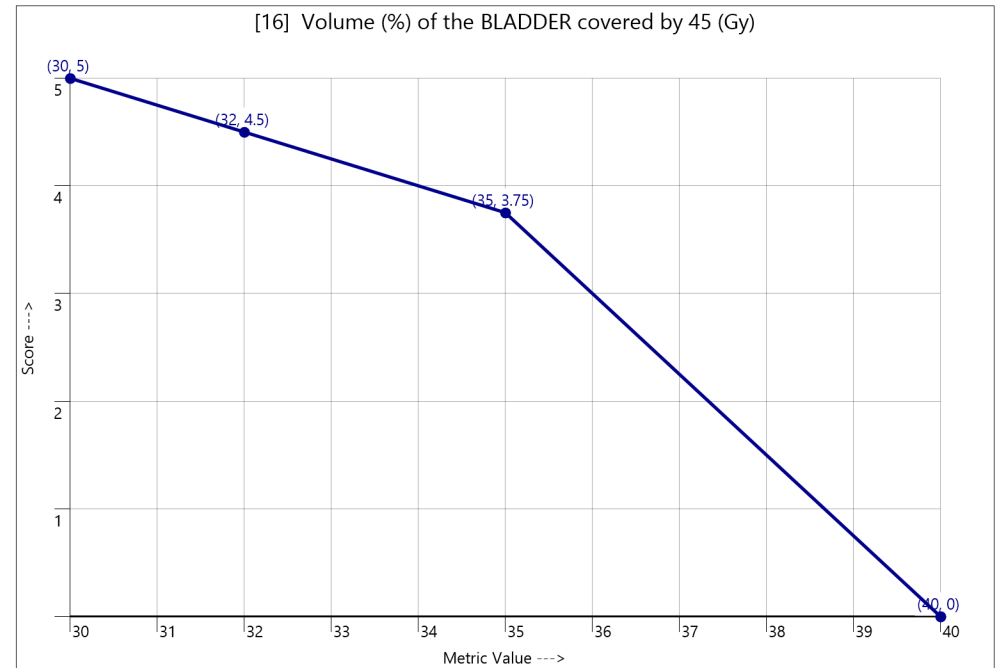
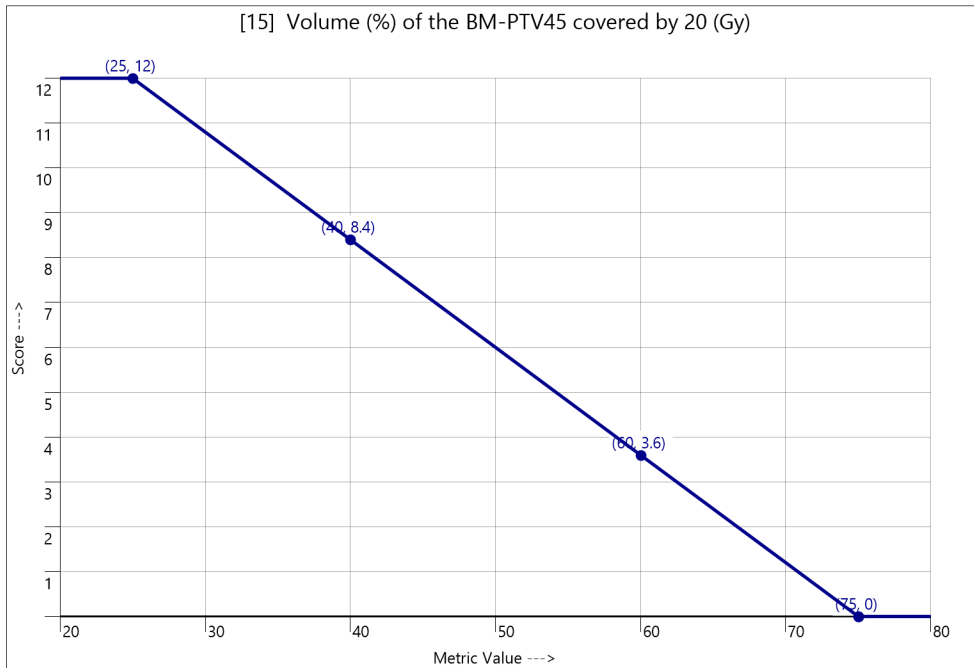
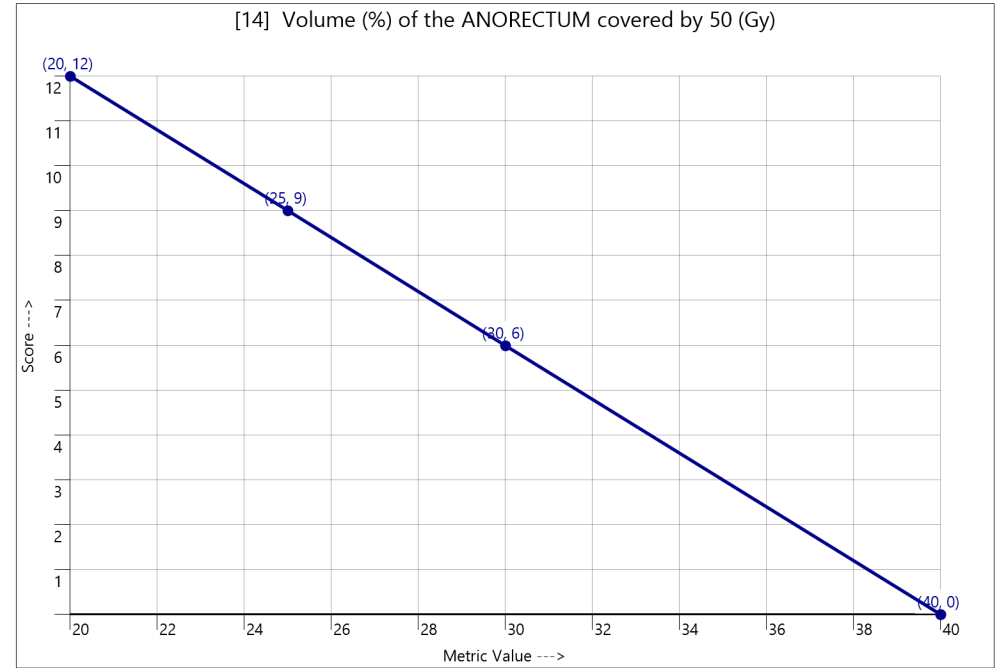
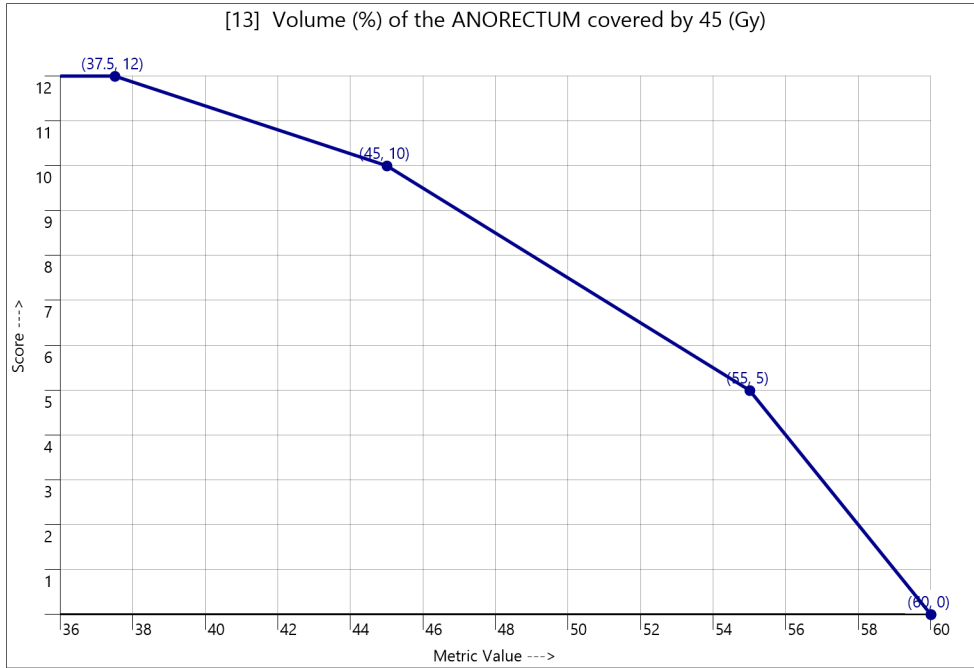
PTV45 and PTV50, SIB in 25 fractions (1.8 and 2.0 Gy/fraction)

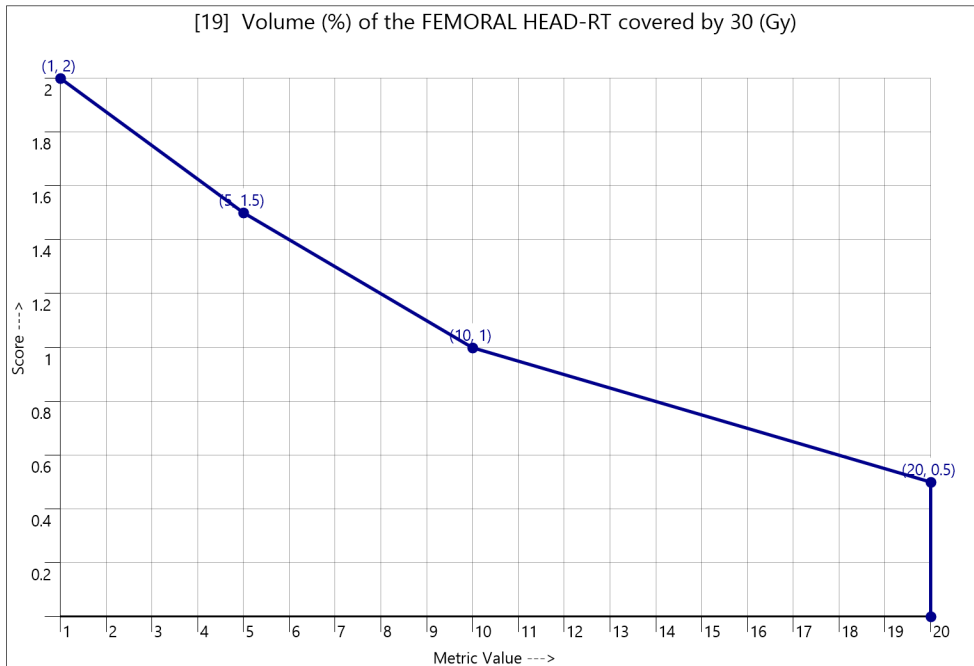
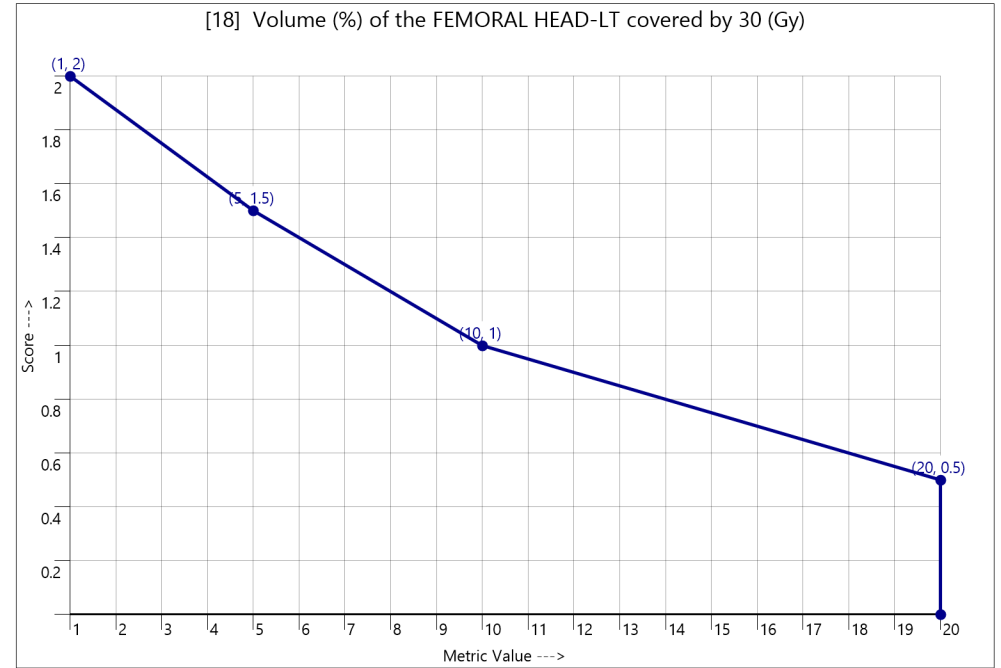
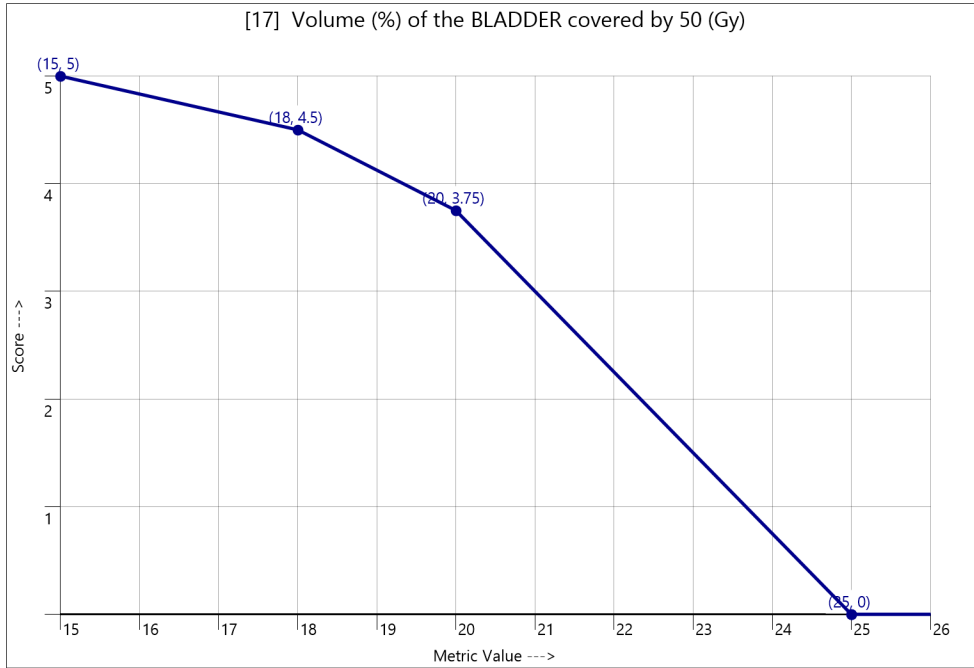
#	METRIC ID (26 Total Metrics)	MIN REQ	IDEAL	WEIGHT (150)
[21]	Number of unique isocenters	---	---	---
[22]	Number of unique couch angles	---	---	---
[23]	Cumulative meterset over all treatment beams	---	---	---
[24]	Estimated 'beam-on' time, all beams (minutes)	---	---	---
[25]	Max dose voxel dimension (mm)	---	---	---
[26]	Structure(s) not fully covered by dose grid	---	---	---











[20] Number of treatment beams

Metric 20: Unscored Metric (no metric objective defined)

[21] Number of unique isocenters

Metric 21: Unscored Metric (no metric objective defined)

[22] Number of unique couch angles

Metric 22: Unscored Metric (no metric objective defined)

[23] Cumulative meterset over all treatment beams

Metric 23: Unscored Metric (no metric objective defined)

[24] Estimated 'beam-on' time, all beams (minutes)

Metric 24: Unscored Metric (no metric objective defined)

[25] Max dose voxel dimension (mm)

Metric 25: Unscored Metric (no metric objective defined)

[26] Structure(s) not fully covered by dose grid

Metric 26: Unscored Metric (no metric objective defined)